



## Medical Protection Cover Front Leg

Professional alternative to a collar. Protects the dog's front leg so that the dog cannot bite or lick on a surgical wound, drainage, stitches and itches. Made with ScandiTex, a waterproof, stretchy and breathable fabric. No irritating seams on the inside.

### Indications

- Instead of stressful collar
- Post-op.
- Skin diseases, irritation and wounds
- Drainage
- Over bandages
- Can be used 24/7

### Size

Stocked in seven sizes: XXXS, XXS, XS, S, M, L and XL.  
Contact Scandi Orthopedic if other size is needed.

### Material

ScandiTex, Velcro

### Washing instructions

Clean the product with mild detergent, by hand, maximum 40 °C.

# Size calculation

## Medical Protection Cover Front Leg



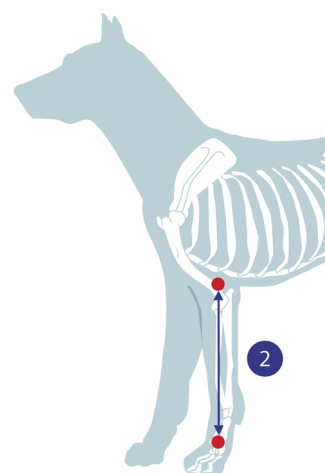
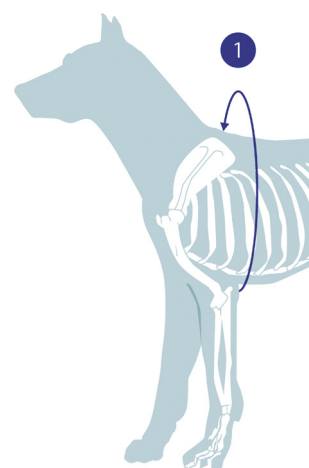
Scandi  
orthopedic

### Measurement

Perform the measurement with the dog standing. Use the metric system.

1. Measure the circumference of the chest at its widest (just behind the front legs).

2. Measure the distance between the armpit and the top of the paw.



### Sizing

Choose an appropriate size below.

| Size  | 1. (cm)      | 2. (cm)     |
|-------|--------------|-------------|
| XXXXS | 25,5 - 33,5  | 10,5 - 13   |
| XXS   | 38,5 - 53,5  | 13,5 - 19,5 |
| XS    | 37,5 - 45,5  | 20 - 24,5   |
| S     | 52 - 67      | 23,5 - 29,5 |
| M     | 65 - 88      | 27 - 33,5   |
| L     | 76,5 - 107,5 | 31 - 37     |
| XL    | 81 - 117     | 34 - 42     |